



Artisans' Caucasus
Crafting Impetus

Artisans' Caucasus LLC is an official representative of Gardashlar Mebel CJSC for global sales

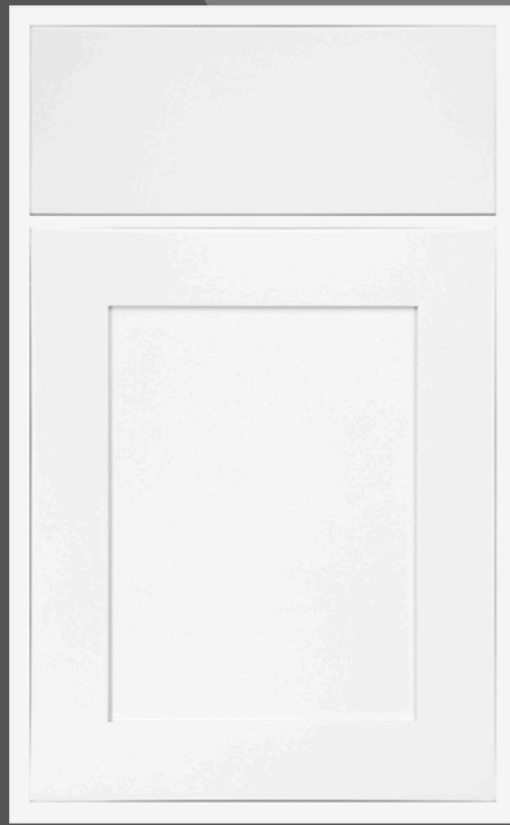
571 310 0018
4445 Corporation Lane, Ste. 264
Virginia Beach, VA 23462, USA
hello@acaucas.com
www.acaucas.com

2024-2025
L O O K B O O K



GARDASHLAR
M E B E L

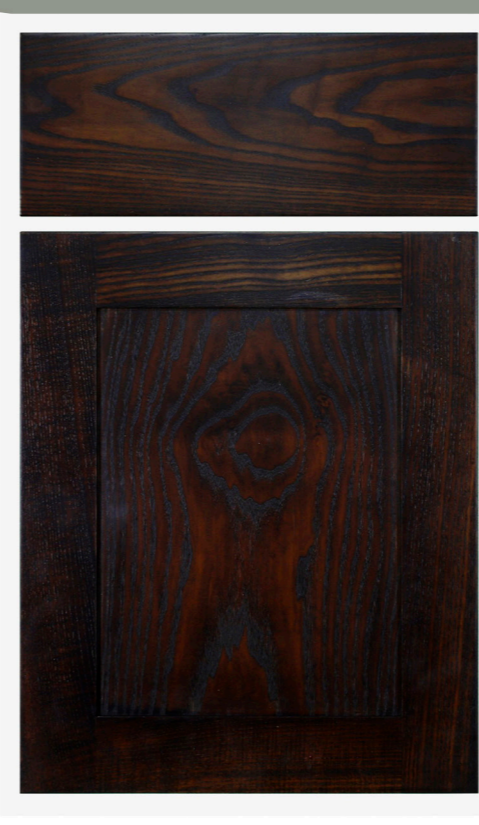
+994 77 486 24 22
AZ 1078, Baku Hasan Aliyev Str.12 A
info@gardashlar.com
www.gardashlar.com



CS
(CAUCASIAN SNOW)



PG
(PURE GRAY)



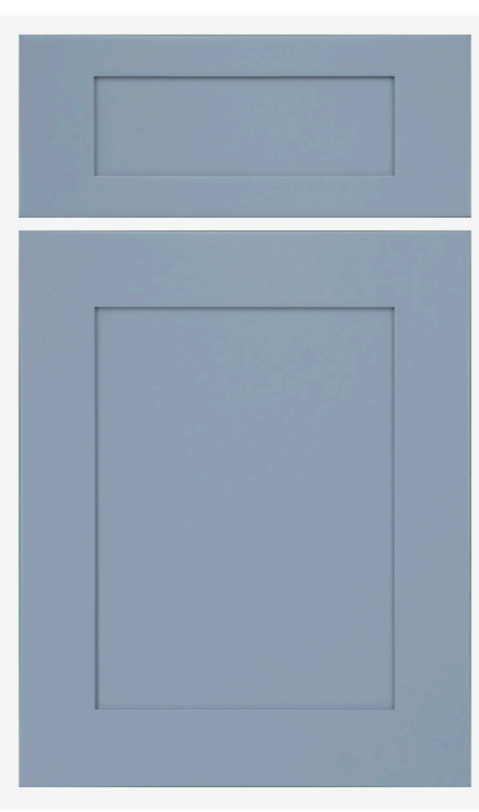
AW
(ASH WOOD)



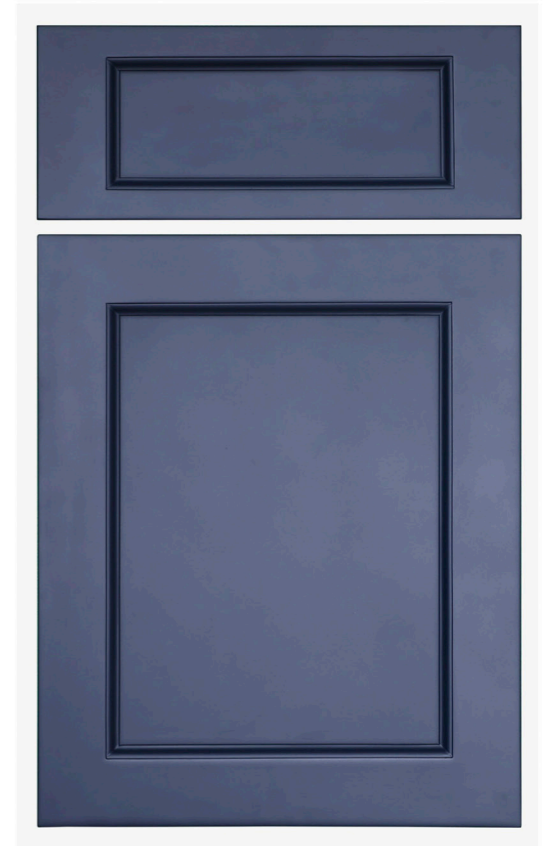
NB
(NEVE BIANCO)



AA
(AVARIO ANTICO)



CB
(CASPIAN BLUE)



GB
(GALASSIA BLUE)

| | CS (CAUCASIAN SNOW) | PG (PURO GRAY) | AA (AVORIO ANTICO) | AW (ASH WOOD) |
|------------------------------|---|---|---|---|
| Material | Solid wood, Fagus sylvatica (European beech) | Solid wood, Fagus sylvatica (European beech) | Solid wood, Fraxinus excelsior (European ash) | Solid wood, Fraxinus excelsior (European ash) |
| Door style | Shaker, full overlay | Full overlay | Full overlay | Shaker, full overlay |
| Color | White | Gray | Ivory | Natural |
| Front Frame | 3/4 inch, Solid wood, European beech | 3/4 inch, Solid wood, European beech | 3/4 inch, Solid wood, European ash | 3/4 inch, Solid wood, European ash |
| Door Frame | 3/4 inch, Solid wood, European beech | 3/4 inch, Solid wood, European beech | 3/4 inch, Solid wood, European ash | 3/4 inch, Solid wood, European ash |
| Door Center | MDF | MDF | Plywood + wood veneer | Plywood + wood veneer |
| Sides (Wall and Base) | 1/2" Plywood | 1/2" Plywood | 1/2" Plywood | 1/2" Plywood |
| Top and Bottom (Wall) | 1/2" Plywood | 1/2" Plywood | 1/2" Plywood | 1/2" Plywood |
| Bottom (Base) | 1/2" Plywood | 1/2" Plywood | 1/2" Plywood | 1/2" Plywood |
| Cabinet Interior | Matches door color | Matches door color | Matches door color | Matches door color |
| Back Panel (Wall) | 1/2" Plywood, picture frame recess style | 1/2" Plywood, picture frame recess style | 1/2" Plywood, picture frame recess style | 1/2" Plywood, picture frame recess style |
| Hinges | GM. Concealed 6-way adjustable soft close door hinges | GM. Concealed 6-way adjustable soft close door hinges | GM. Concealed 6-way adjustable soft close door hinges | GM. Concealed 6-way adjustable soft close door hinges |
| Connectors | Pre-installed, electrostatic color coated, metal clip | Pre-installed, electrostatic color coated, metal clip | Pre-installed, electrostatic color coated, metal clip | Pre-installed, electrostatic color coated, metal clip |
| Shelves | 1/2 inch Plywood | 1/2 inch Plywood | 1/2 inch Plywood | 1/2 inch Plywood |
| Clips | Metal shelf clips | Metal shelf clips | Metal shelf clips | Metal shelf clips |
| Drawer Box Sides | 3/4 inch Solid wood, European beech | 3/4 inch Solid wood, European beech | 3/4 inch Solid wood, European ash | 3/4 inch Solid wood, European ash |
| Drawer Botton | 1/2 inch Plywood | 1/2 inch Plywood | 1/2 inch Plywood | 1/2 inch Plywood |
| Drawer Length | 21 inch | 21 inch | 21 inch | 21 inch |
| Drawer Construction | Dovetail | Dovetail | Dovetail | Dovetail |
| Drawer Glides | GM. Undermount, full extension, soft close | GM. Undermount, full extension, soft close | GM. Undermount, full extension, soft close | GM. Undermount, full extension, soft close |
| Base Corner Supports | Wood corner brackets | Wood corner brackets | Wood corner brackets | Wood corner brackets |



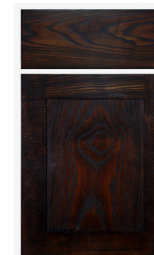
CS
(CAUCASIAN SNOW)



PG
(PURE GRAY)



AA
(AVARIO ANTICO)

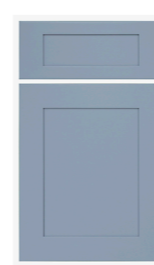


AW
(ASH WOOD)

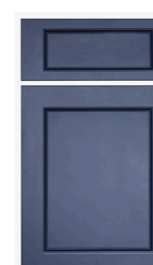
| | NB (NEVE BIANCO) | CB (CASPIAN BLUE) | GB (GALASSIA BLU) |
|------------------------------|---|---|---|
| Material | MDF | MDF | Solid wood, Acer Platanoides (Norway maple) |
| Door style | Shaker, full overlay | Shaker, full overlay | Full overlay |
| Color | White | Blue | Navy Blue |
| Front Frame | 3/4 inch, Solid wood, European beech | 3/4 inch, Solid wood, European beech | 3/4 inch, Solid wood, Norway maple |
| Door Frame | 3/4 inch, MDF | 3/4 inch, MDF | 3/4 inch, Solid wood, Norway maple |
| Door Center | MDF | MDF | MDF |
| Sides (Wall and Base) | 1/2" Plywood | 1/2" Plywood | 1/2" Plywood |
| Top and Bottom (Wall) | 1/2" Plywood | 1/2" Plywood | 1/2" Plywood |
| Bottom (Base) | 1/2" Plywood | 1/2" Plywood | 1/2" Plywood |
| Cabinet Interior | Matches door color | Matches door color | Matches door color |
| Back Panel (Wall) | 1/2" Plywood, picture frame recess style | 1/2" Plywood, picture frame recess style | 1/2" Plywood picture frame recess style |
| Hinges | GM. Concealed 6-way adjustable soft close door hinges | GM. Concealed 6-way adjustable soft close door hinges | GM. Concealed 6-way adjustable soft close door hinges |
| Connectors | Pre-installed, electrostatic color coated, metal clip | Pre-installed, electrostatic color coated, metal clip | Pre-installed, electrostatic color coated, metal clip |
| Shelves | 1/2 inch Plywood | 1/2 inch Plywood | 1/2 inch Plywood |
| Clips | Metal shelf clips | Metal shelf clips | Metal shelf clips |
| Drawer Box Sides | 5/8 inch Plywood | 5/8 inch Plywood | 3/4 inch Solid wood, Norway maple |
| Drawer Botton | 1/2 inch Plywood | 1/2 inch Plywood | 1/2 inch Plywood |
| Drawer Length | 21 inch | 20 inch | 21 inch |
| Drawer Construction | Dovetail | Dovetail | Dovetail |
| Drawer Glides | GM. Undermount, full extension, soft close | GM. Undermount, full extension, soft close | GM. Undermount, full extension, soft close |
| Base Corner Supports | Wood corner brackets | Wood corner brackets | Wood corner brackets |



NB
(NEVE BIANCO)



CB
(CASPIAN BLUE)



GB
(GALASSIA BLUE)

CABINET DETAILS





-07-

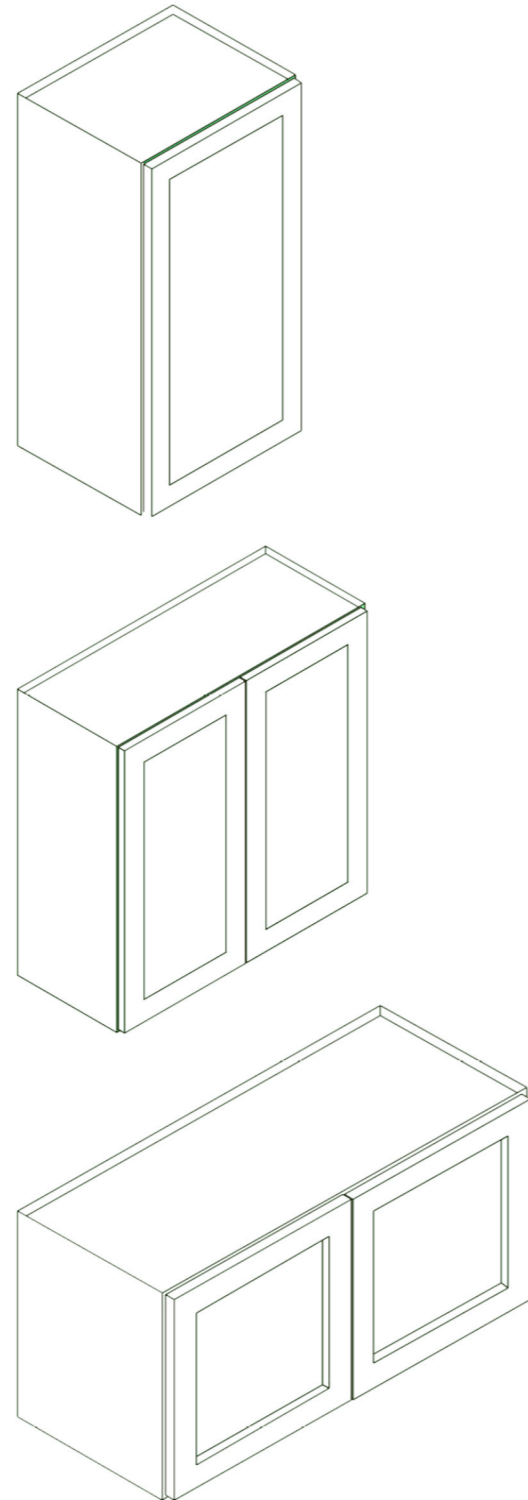


-08-



KITCHEN WALL CABINET

| | CS | PG | NB | GB | AA | AW |
|--------------|----|----|----|----|----|----|
| W0930 | | | | | | |
| W0936 | | | | | | |
| W0942 | | | | | | |
| W1230 | | | | | | |
| W1236 | | | | | | |
| W1242 | | | | | | |
| W1530 | | | | | | |
| W1536 | | | | | | |
| W1542 | | | | | | |
| W1830 | | | | | | |
| W1836 | | | | | | |
| W1842 | | | | | | |
| W2130 | | | | | | |
| W2136 | | | | | | |
| W2142 | | | | | | |
| W2430 | | | | | | |
| W2436 | | | | | | |
| W2442 | | | | | | |
| W2730 | | | | | | |
| W2736 | | | | | | |
| W2742 | | | | | | |
| W3030 | | | | | | |
| W3036 | | | | | | |
| W3042 | | | | | | |
| W3024 | | | | | | |
| W3330 | | | | | | |
| W3336 | | | | | | |
| W3342 | | | | | | |
| W3630 | | | | | | |
| W3636 | | | | | | |
| W3632 | | | | | | |
| W3012 | | | | | | |
| W3015 | | | | | | |
| W301524 | | | | | | |
| W3018 | | | | | | |
| W3024 | | | | | | |
| W302424 | | | | | | |
| W3312 | | | | | | |
| W3315 | | | | | | |
| W331524 | | | | | | |
| W3318 | | | | | | |
| W3324 | | | | | | |
| W332424 | | | | | | |



| | CS | PG | NB | GB | AA | AW |
|---------|----|----|----|----|----|----|
| W3612 | | | | | | |
| W3615 | | | | | | |
| W361524 | | | | | | |
| W3618 | | | | | | |
| W3624 | | | | | | |
| W362424 | | | | | | |

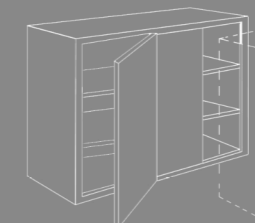
WALL DIAGONAL CORNER

| | CS | PG | NB | GB | AA | AW |
|---------|----|----|----|----|----|----|
| WDC2442 | | | | | | |
| WDC2436 | | | | | | |
| WDC2430 | | | | | | |



WALL BLIND CORNER CABINET

| | CS | PG | NB | GB | AA | AW |
|----------|----|----|----|----|----|----|
| WBLC3030 | | | | | | |
| WBLC3036 | | | | | | |
| WBLC3042 | | | | | | |



NOTE: Please specify right or left ordering.



Lor
em
ips
um
dol
or
sit
am



-13-



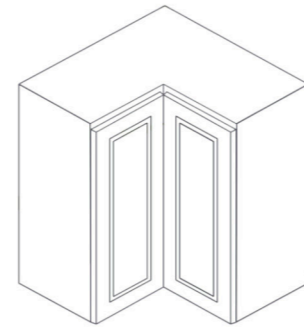
-14-

KITCHEN WALL CABINETS

WALL CORNER CABINET

WDC2430
WDC2436
WDC2442

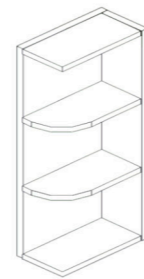
| CS | PG | NB | GB | AA | AW |
|----|----|----|----|----|----|
| | | | | | |
| | | | | | |
| | | | | | |



WALL SHELF

Ws0630
Ws0636
Ws0642

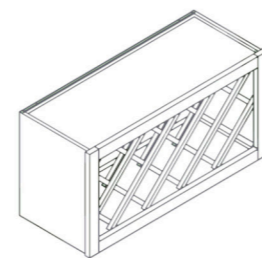
| CS | PG | NB | GB | AA | AW |
|----|----|----|----|----|----|
| | | | | | |
| | | | | | |
| | | | | | |



WINE RACK CABINET

W3018WR

| CS | PG | NB | GB | AA | AW |
|----|----|----|----|----|----|
| | | | | | |

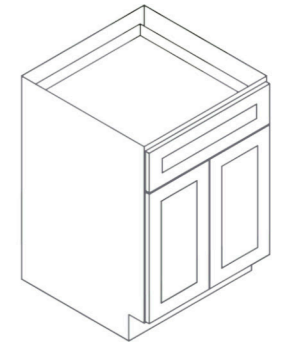
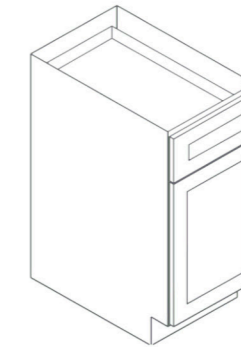


KITCHEN BASE CABINETS

BASE CABINETS

B12
B15
B18
B21
B24
B27
B30
B33
B36

| CS | PG | NB | GB | AA | AW |
|----|----|----|----|----|----|
| | | | | | |
| | | | | | |
| | | | | | |
| | | | | | |
| | | | | | |
| | | | | | |
| | | | | | |
| | | | | | |



BASE PULL OUT - WITH SPICE RACK

SPB09
TCB15
TCB18
TCB21

| CS | PG | NB | GB | AA | AW |
|----|----|----|----|----|----|
| | | | | | |
| | | | | | |
| | | | | | |

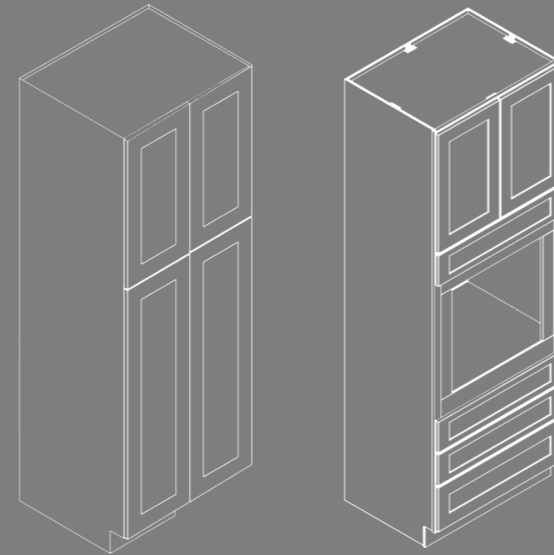


KITCHEN BASE CABINETS

TALL PANTRY & OVEN CABINET

- TB1584
- TB1590
- TB1596
- TB2484
- TB2490
- TB2496
- TB3084
- TB3090
- TB3096
- TB3384
- TB3390
- TB3396
- OTB3390
- OTB3396

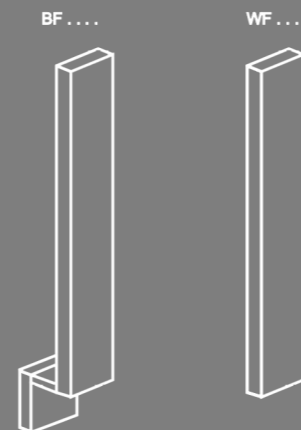
| CS | PG | NB | GB | AA | AW |
|----|----|----|----|----|----|
| | | | | | |
| | | | | | |
| | | | | | |
| | | | | | |
| | | | | | |
| | | | | | |
| | | | | | |
| | | | | | |
| | | | | | |
| | | | | | |
| | | | | | |
| | | | | | |
| | | | | | |
| | | | | | |
| | | | | | |
| | | | | | |
| | | | | | |
| | | | | | |



WALL & BASE FILLERS

- BF03
- WF0330
- WF0336
- WF0342
- WF0396
- BF06
- WF0642
- WF0696

| CS | PG | NB | GB | AA | AW | CB |
|----|----|----|----|----|----|----|
| | | | | | | |
| | | | | | | |
| | | | | | | |
| | | | | | | |
| | | | | | | |
| | | | | | | |
| | | | | | | |
| | | | | | | |
| | | | | | | |
| | | | | | | |
| | | | | | | |
| | | | | | | |
| | | | | | | |
| | | | | | | |
| | | | | | | |
| | | | | | | |
| | | | | | | |
| | | | | | | |

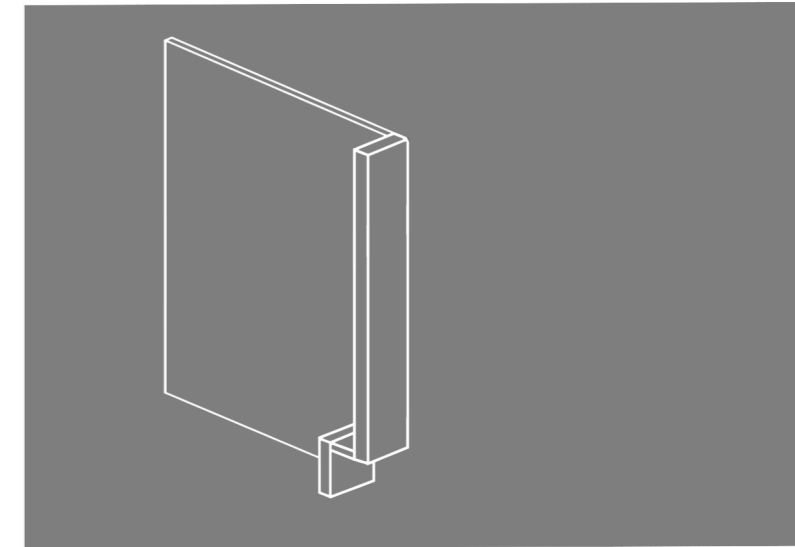


KITCHEN BASE CABINETS

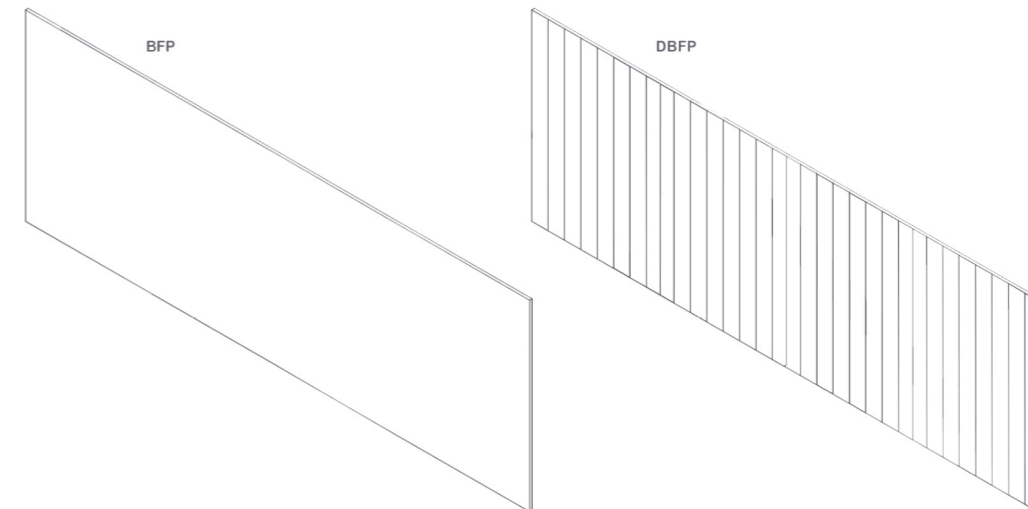
DISHWASHER PANELS

DWP

| CS | PG | NB | GB | AA | AW |
|----|----|----|----|----|----|
| | | | | | |
| | | | | | |



FINISHED BACK PANELS



BFP3696
DBFP3696

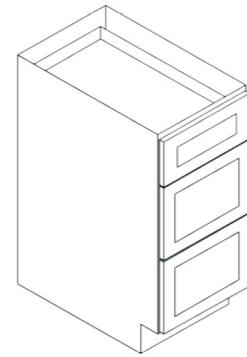
| CS | PG | NB | GB | AA | AW |
|----|----|----|----|----|----|
| | | | | | |
| | | | | | |

KITCHEN BASE CABINETS

DRAWER BASE

DB12
DB15
DB18
DB21
DB24
DB30

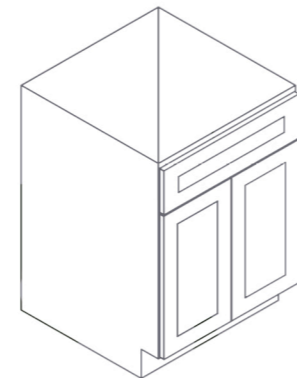
| CS | PG | NB | GB | AA | AW |
|----|----|----|----|----|----|
| | | | | | |
| | | | | | |
| | | | | | |
| | | | | | |
| | | | | | |



SINK BASE

SB24
SB27
SB30
SB33
SB36

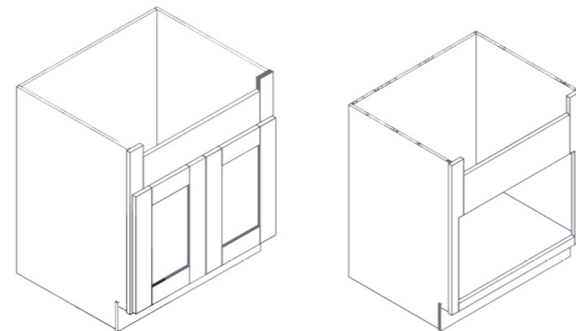
| CS | PG | NB | GB | AA | AW |
|----|----|----|----|----|----|
| | | | | | |
| | | | | | |
| | | | | | |
| | | | | | |
| | | | | | |



FARM SINK BASE

FSB30
FSB33
FSB36

| CS | PG | NB | GB | AA | AW |
|----|----|----|----|----|----|
| | | | | | |
| | | | | | |
| | | | | | |

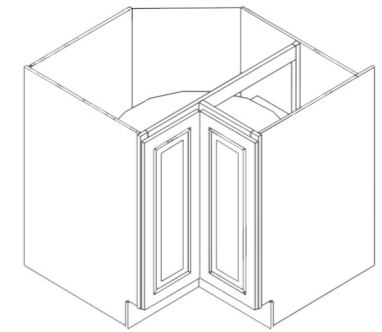


KITCHEN BASE CABINETS

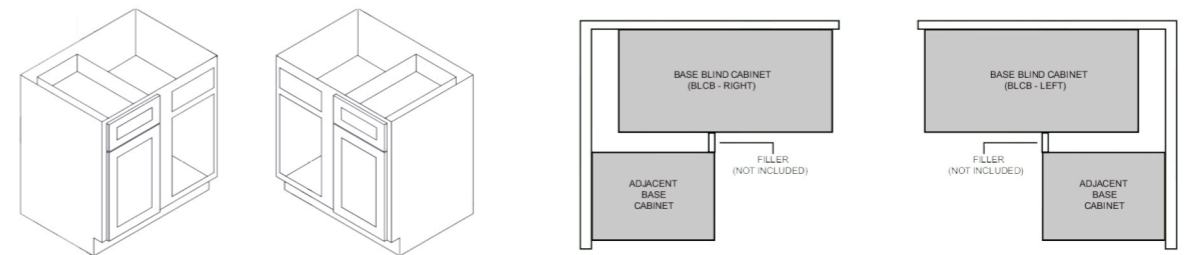
LAZY SUSAN BASE

LSB33
LSB36

| CS | PG | NB | GB | AA | AW |
|----|----|----|----|----|----|
| | | | | | |
| | | | | | |



BASE BLIND CORNER



BLCB36 (39-42)
BLCB39 (42-45)
BLCB42 (45-48)

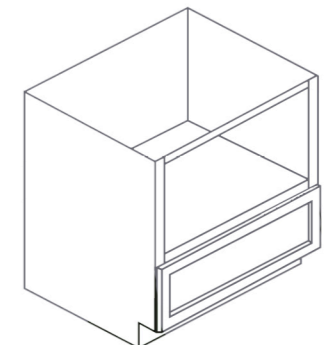
| CS | PG | NB | GB | AA | AW |
|----|----|----|----|----|----|
| | | | | | |
| | | | | | |
| | | | | | |

NOTE: Please specify right or left ordering.

MICROWAVE BASE CABINET

B30MW
B33MW

| CS | PG | NB | GB | AA | AW |
|----|----|----|----|----|----|
| | | | | | |
| | | | | | |





TRIM DETAILS

REFRIGERATOR PANEL

RP

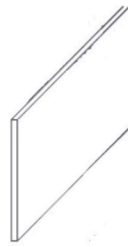
| | | | | | |
|----|----|----|----|----|----|
| CS | PG | NB | GB | AA | AW |
| | | | | | |



RP 30 x 0,7086 x 96

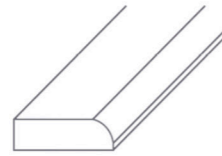
• Refrigerator panel

CORNER MOLDINGS



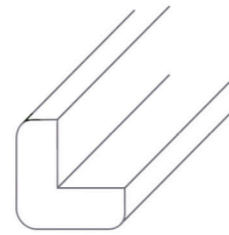
TK 96 x 0,1181 x 4,5

• Toe kick



SM L=96" 1/4 x 3/4

• Scribe molding



FCM L=96" 3/4 x 3/4

• Finish corner molding



CM 96-4

• Crown Molding

| | | | | | | |
|----|----|----|----|----|----|----|
| CS | PG | NB | GB | AA | AW | CB |
| | | | | | | |
| | | | | | | |
| | | | | | | |

TK
SM
FCM
CM

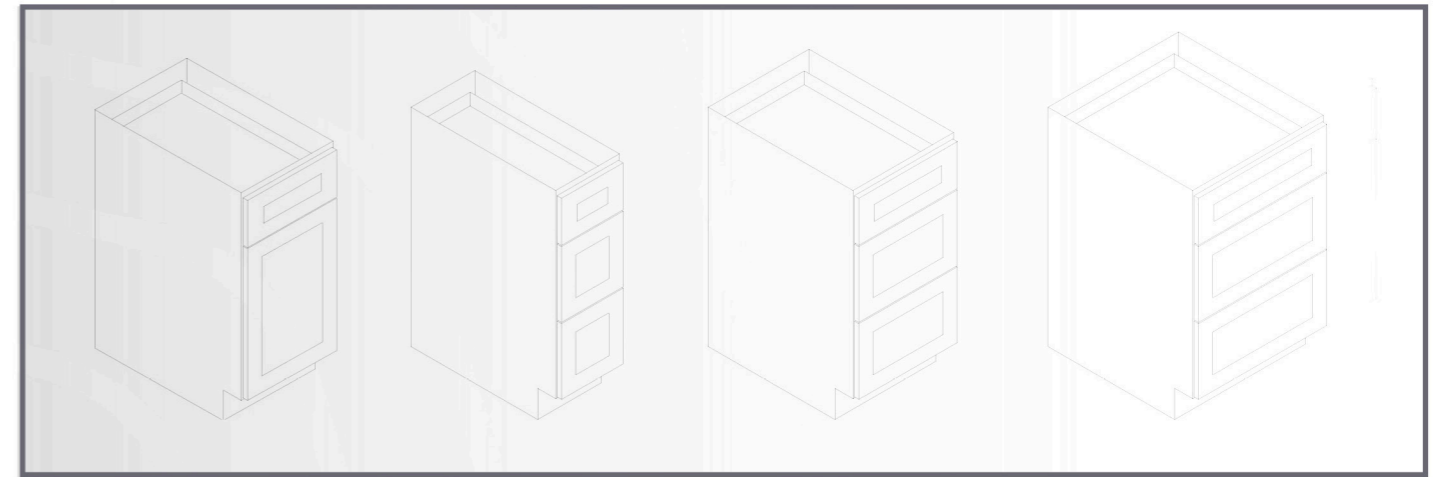


VANITIES



VANITIES

BASE CABINETS



- VB15
- VDB12
- VDB15
- VDB18
- VDB24

| PG | NB | CB | GB |
|----|----|----|----|
| | | | |
| | | | |
| | | | |
| | | | |



- VSB24
- VSB30
- VSB36
- VSB42

| PG | NB | CB | GB |
|----|----|----|----|
| | | | |
| | | | |
| | | | |